

# TS-1057: Does Call Accounting For Hotel/Motel Show Just LOCAL CALL Or LONG DISTANCE, Or Does It Have The Ability To Show CITY & STATE?

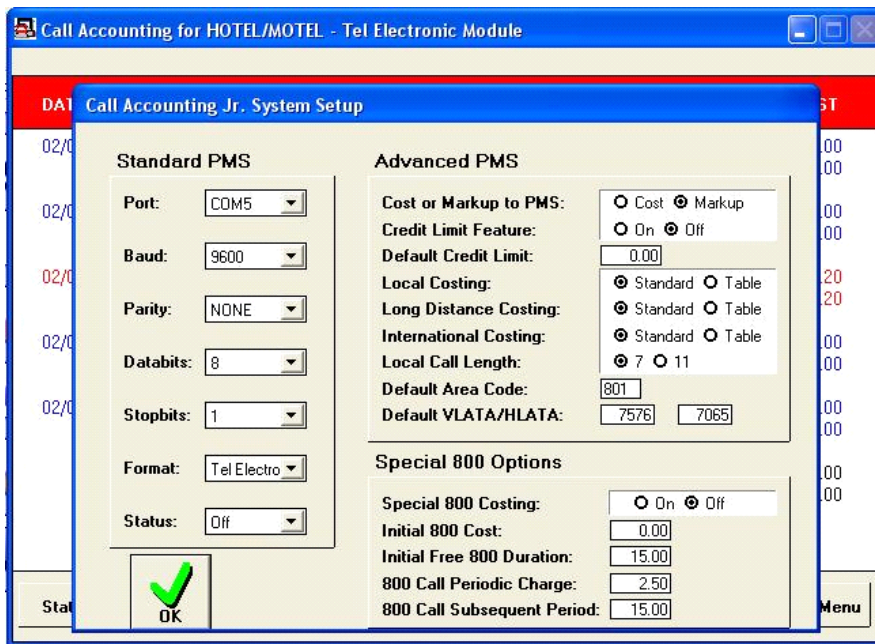
Comm One LLC - Technical Support Documentation  
[Support Documentation Index](#)

Monday, March 22, 2010  
9:56 AM

The information in this article applies to:  
HOTEL MOTEL Version

## QUESTION:

Does the Hotel/Motel Version have the ability to show CITY AND STATE instead of just Local or Long Distance Call ?



## ANSWER:

There are two options under the PMS Setup that control how the calls show on the Hotel/Motel Version. To get to the PMS Setup you do the following:

- Press ESC to get to the menu.
- Select UTILITIES
- Select SYSTEM SETUP
- Select PMS

On the Right center of the screen under the ADVANCED PMS options, there are settings for LOCAL COSTING and LONG DISTANCE costing. The options are as follows:

**STANDARD:** Uses the standard rates shown under the SYSTEM SETUP screen. Show LOCAL or LONG DISTANCE as the description for each call.

**TABLE:** Uses the TABLE Rates shown under the UTILITIES menu and will use the full Area Code Tables to attach the CITY/STATE to each call. Setting International to TABLE will use the International Table under the UTILITIES menu so that the country code shows instead of just INTERNATIONAL CALL.

**Comm One Technical Support**  
12723 Whisper Creek Cove  
Draper, UT 84020  
801-523-9797  
support@commone.com

Last Reviewed: 08/23/2010  
TS-1057

TS-1057	Date: 03/22/2 010 Keyword s: Asterisk Script Comman ds
---------	--