

TS-1091: Can I Customize The Rate Charge For Long Distance In Comm One?

Comm One LLC - Technical Support Documentation

[Support Documentation Index](#)

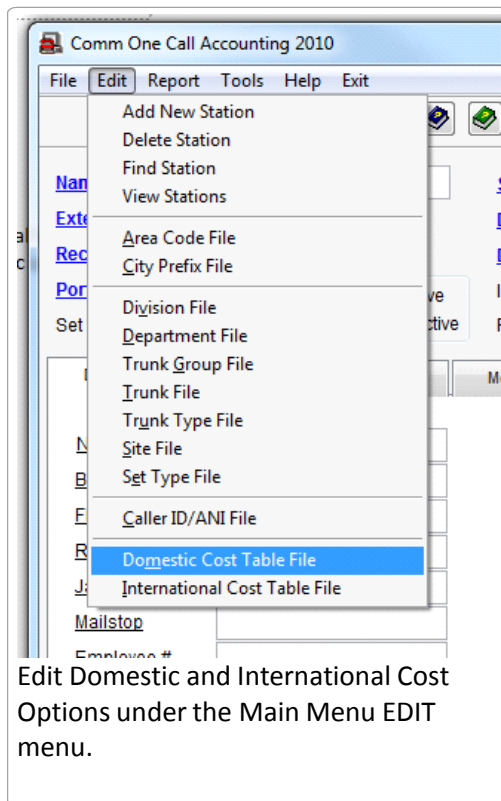
Thursday, April 22, 2010

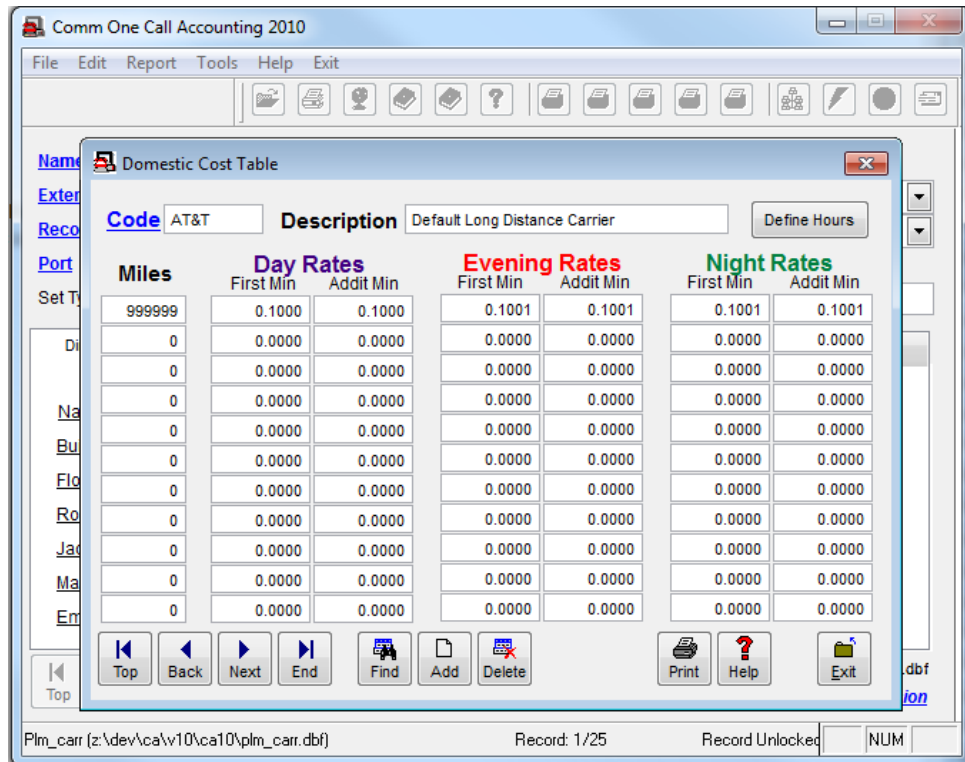
10:44 AM

*The information in this article applies to:
Windows HyperTerminal*

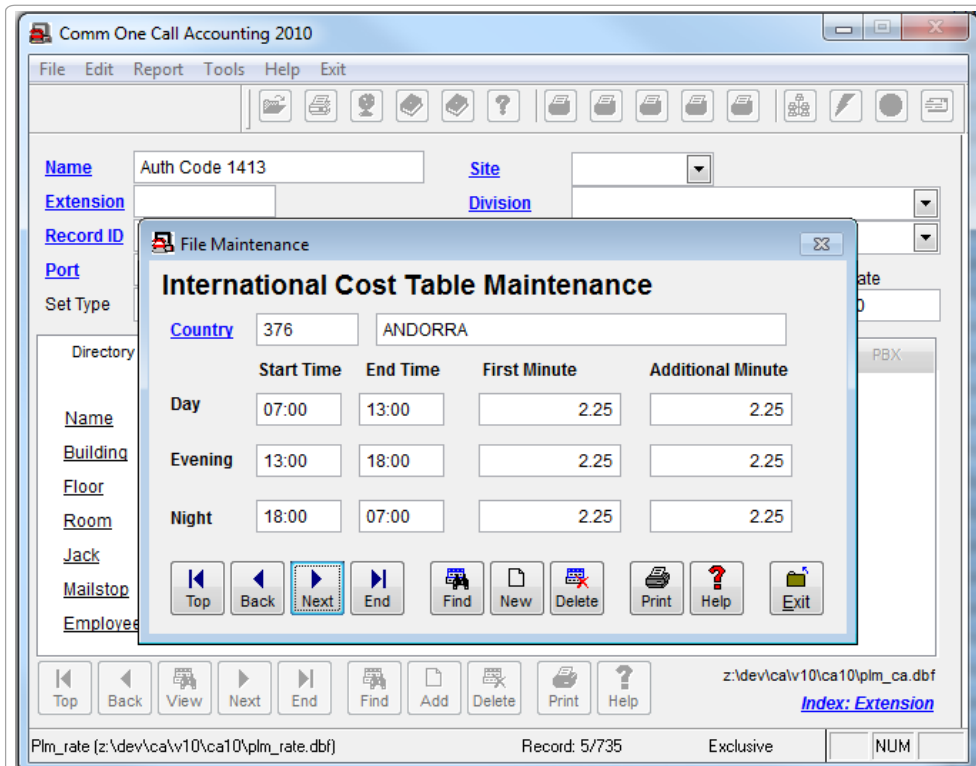
ANSWER:

Yes you can customize the rates that are charged for long distance and/or international calls. The tables can be located under the EDIT menu of the main screen. There is one option for Domestic Long Distance, and another for International Calls.





Edit default domestic call costing table. This is the default table for all long distance costing.



Edit International call costing table from the Edit Menu. There is a table for each country listed by country code.

Comm One Technical Support

12723 Whisper Creek Cove

Draper, UT 84020

801-523-9797

support@commone.com

Last Reviewed: 08/31/2010

TS-1091

TS-1091	Date: 08/31/2010 Keywords: Customize Call Costing
---------	--