

TS-1094: AGGSOFT InterTel Axxess Setup TCP/IP

Comm One LLC - Technical Support Documentation

[Support Documentation Index](#)

Friday, April 23, 2010

2:54 PM

1. Uninstall the current IP Capture Utility
2. Download and install the IP Logger from the AGGSoft Website:
<http://www.aggsoft.com/tcpip-data-logger/download.htm>
3. Rebuild your connection to the PBX in the data logger.
4. Add the "keep-alive" request to the ASCII data query plugin. #00#00#00#00 should be sent every 60 seconds. This will keep it from going off-line.
5. Add this login request of the PBX password is empty activate the data query plugin and use the following string: #02#00#00#00#84#00
6. If you're pbx requires a user name and password you need to activate the data query plugin and put in the following string: smdr#0D#0A#pccsmdr#0D#0A, where #0D#0A are line feed characters

11/04 SAME PBX AS MITEL 5000 (Actually InterTel Axxess PBX)

SAMPLE CONFIGURATION SETTINGS.

CONFIG - DEVICE - ADITIONAL - TCP Keep Alive Mode - Custom

Interval 60 Timeout 1

Simple Terminal Emulation: Off

MODULES

Query Parse Filter

Data Query Module: ASCII data query and parser

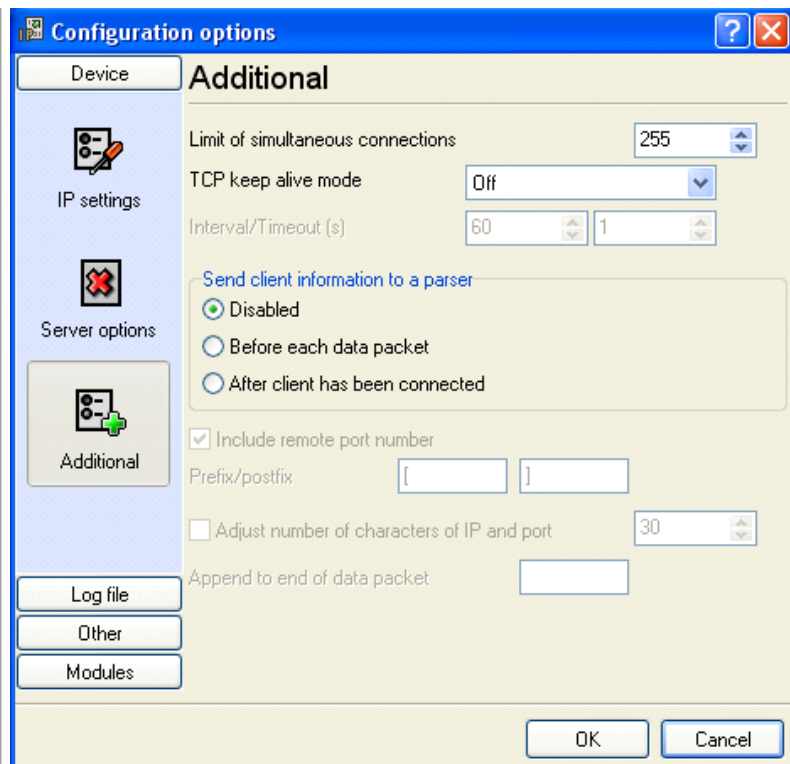
Select SETUP

Add Request:

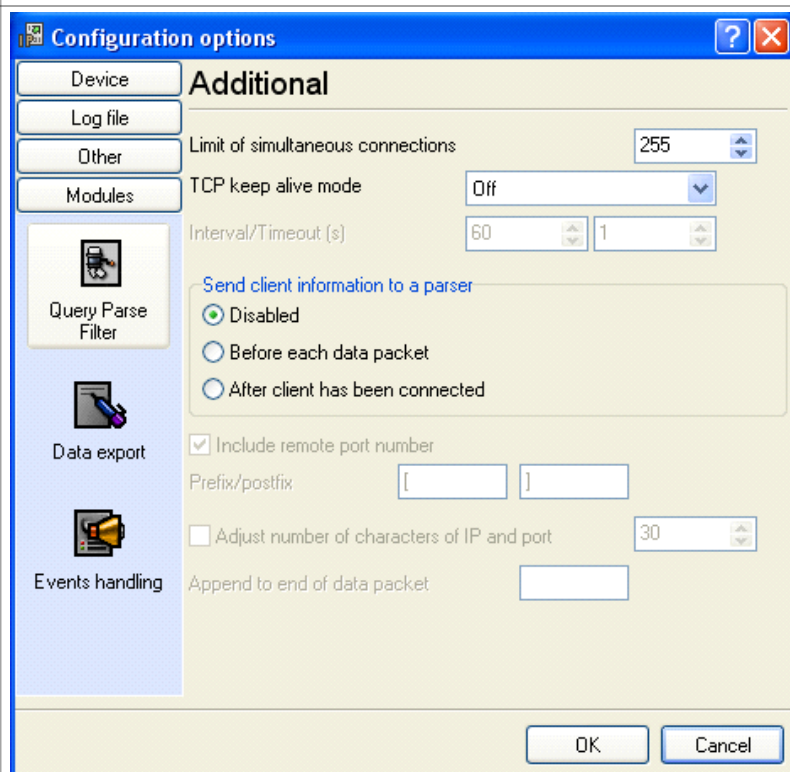
Selecdt ON PORT?DATA SOURCE OPEN

String: smdr#0D#0A#pccsmdr#0D#0A

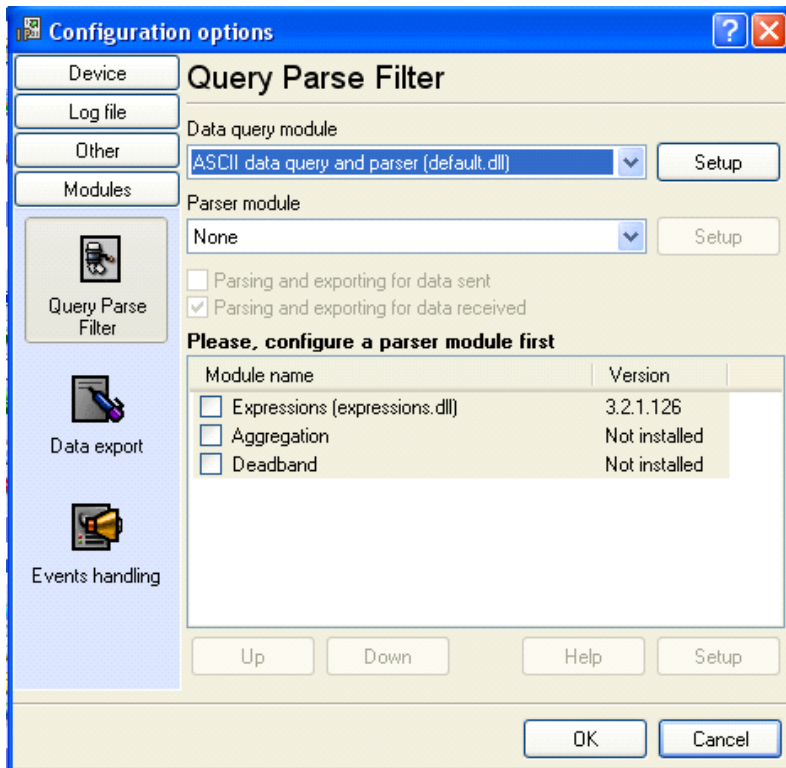
Wait Response Timeout : 5000



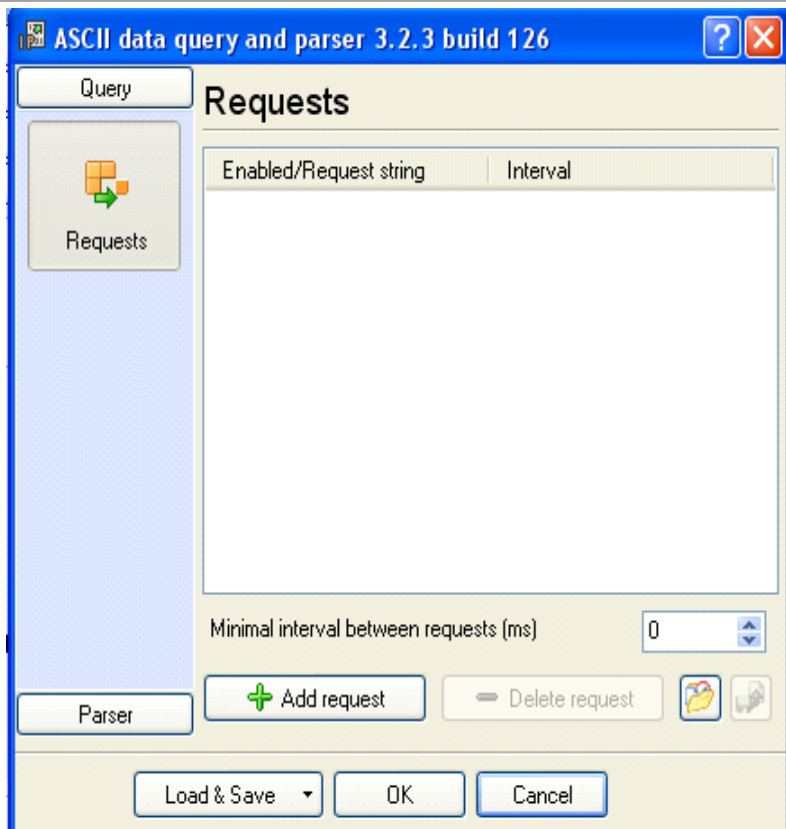
Set Keep Alive to ON under Configuration / Additional



Next Select MODULES, then QUERY PARSE FILTER



In the DATA QUERY select ASCII data QUERY then select SETUP



ADD request, then add a one time login event for system login.
 Use this string if there is no password:

#02#00#00#00#84#00

Use this string if there is a password:
smdr#0D#0Apcssmdr#0D#0A
Change it to the appropriate user name and password.

Add another request for the keep alive, set it to run every 60 seconds,
and use

The following string: . #00#00#00#00

Comm One Technical Support

12723 Whisper Creek Cove

Draper, UT 84020

801-523-9797

support@commone.com

Last Reviewed: 08/31/2010

TS-1094

TS-1094	Date: 08/06/2 010 Keyword s: InterTel Setup for Advance d Logger
---------	---